



Figure 1: Percentage of specimens positive on the respiratory viral multiplex PCR and SARS-CoV-2 PCR

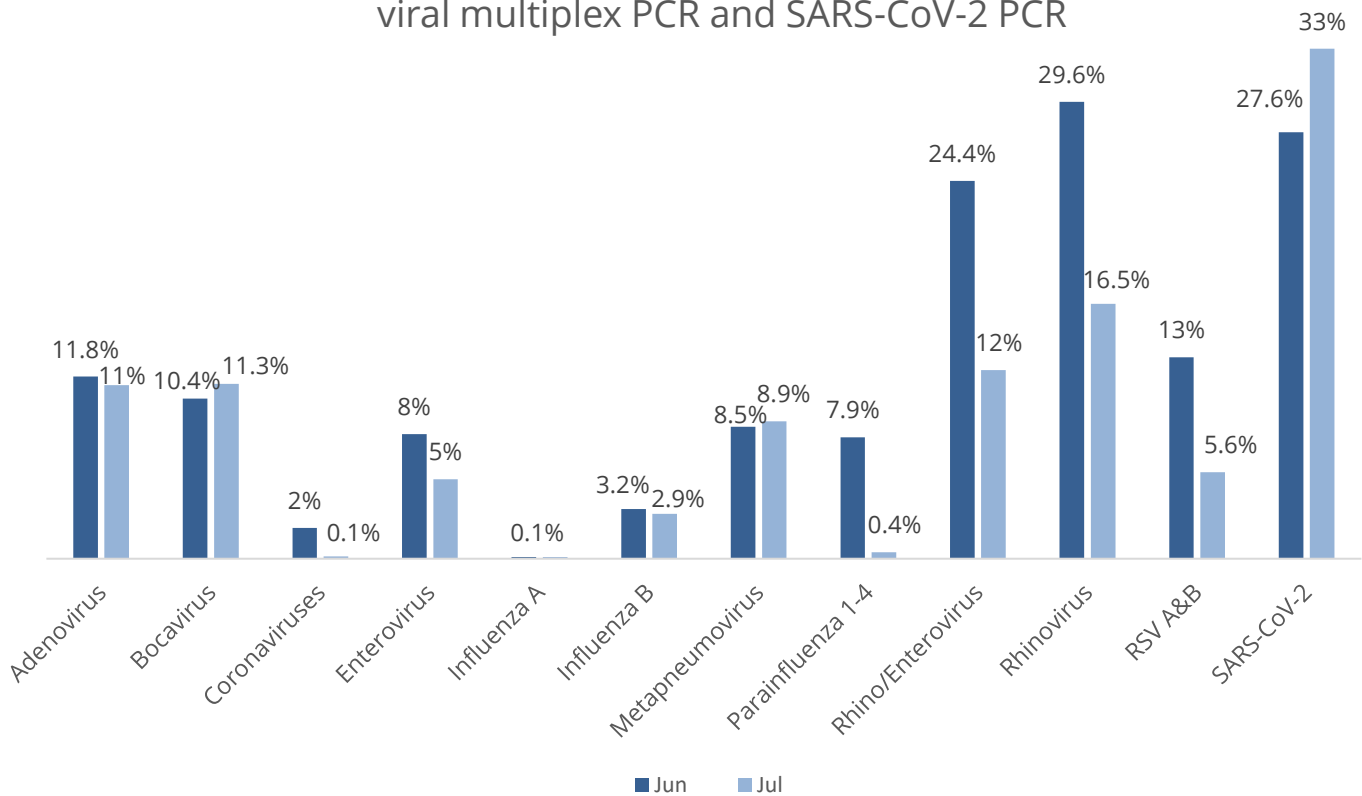


Figure 1: Respiratory viruses – countrywide data July findings

- The most frequently detected viruses during July were as follow: SARS-CoV-2 (33%), Rhinovirus (16.5%), Bocavirus (11.3%) and Adenovirus (11%).
- One cases of Influenza A was detected from the Gauteng province during July. Twenty nine cases of Influenza B were detected during July from the following provinces: Gauteng (14 cases), KwaZulu-Natal (7 cases), Mpumalanga (3 cases), Eastern Cape (3 cases) and one case each from the North West and Western Cape province. Clinicians are advised to remain vigilant and to encourage patients to get the Influenza vaccine.
- The percentage of positive RSV and Parainfluenza virus cases continue to decrease
- The novel Coronavirus, SARS-CoV-2, was detected in 33% of specimens tested nationally.
- Please note: the graph includes the combined data from different respiratory multiplex assays offered by Ampath laboratories as well as the SARS-CoV-2 PCR.
- Refer to the Ampath website for the current and previous respiratory viral statistics both countrywide and per region: <https://www.ampath.co.za/respiratory-tract-infection>.



Figure 2: Percentage of specimens positive for SARS-CoV-2 by province

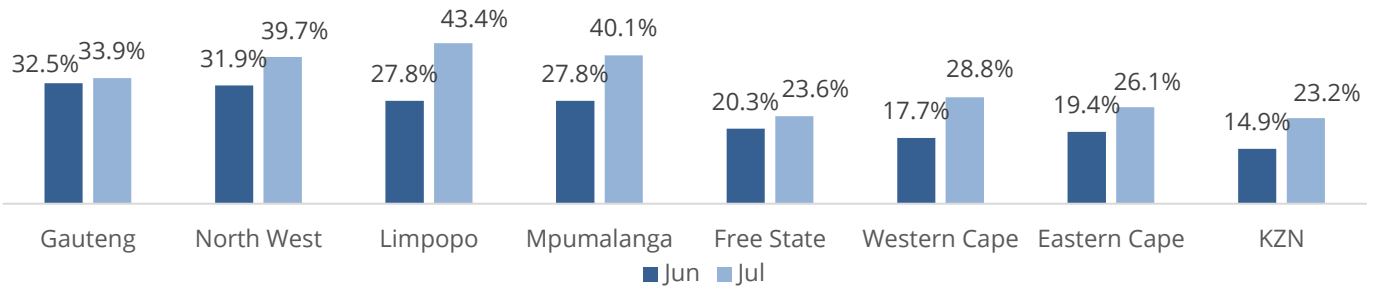


Figure 3: Distribution of total positive SARS-CoV-2 tests per province

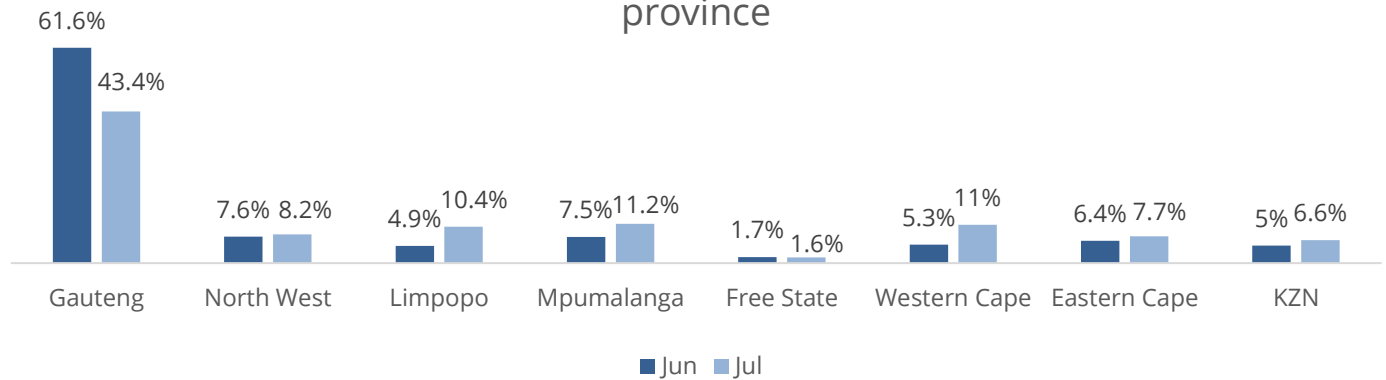


Figure 4: SARS-Cov-2 daily positive percentage rate for July in the Gauteng province

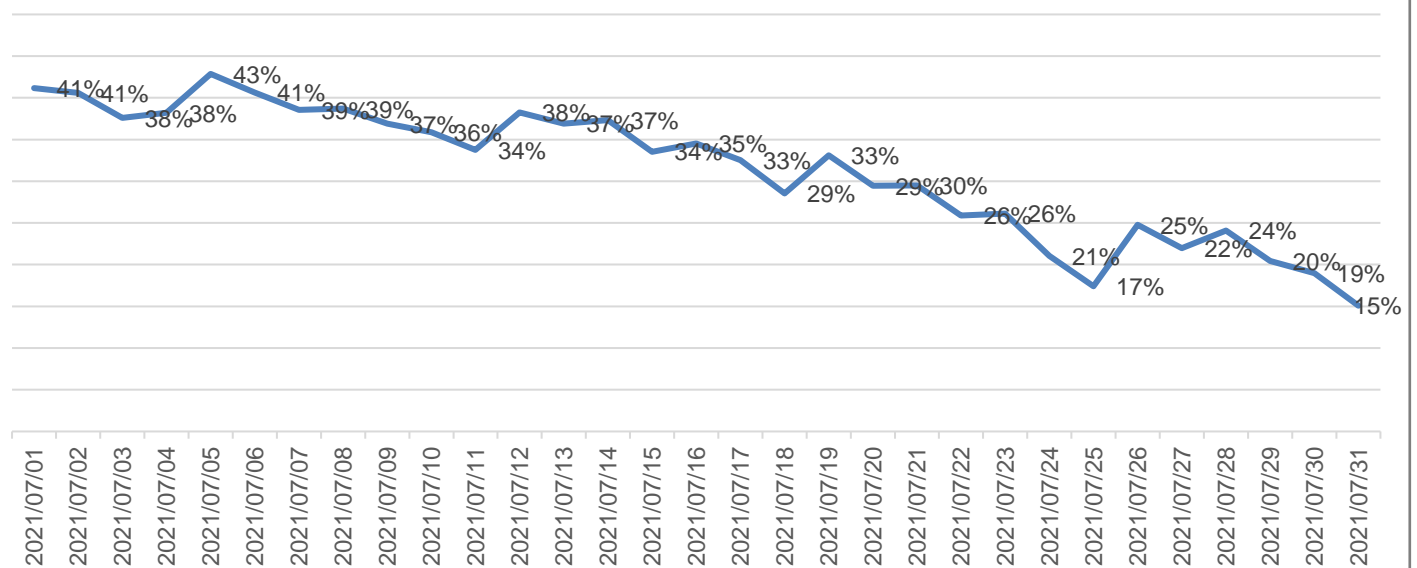




Figure 2: Percentage of total positive SARS-CoV-2 tests per province

- The percentage of specimens testing positive for SARS-CoV-2 during the month of July increased across all provinces. The largest increase in positivity rate was observed in the Limpopo, Mpumalanga, Western Cape and KZN provinces.
- This percentage was calculated by dividing the number of positive specimens per province by the total of specimens submitted per province.

Figure 3: Distribution of specimens positive for SARS-CoV-2 per province

- The majority of the positive SARS-CoV-2 specimens were from the Gauteng province, however this percentage decreased from 61.6% in June to 43.4% in July.
- Limpopo, Mpumalanga and the Western Cape contributed significantly more to the percentage of positive SARS-CoV-2 cases during the month of July as compared to June.
- This percentage was calculated by dividing the number of positive specimens per province by the total of positive specimens countrywide.

Figure 4: SARS-Cov-2 daily positive percentage rate for the month of July in the Gauteng province

- Although the monthly average of specimens positive for SARS-CoV-2 remained high for the month of July, the percentage of specimens testing positive for SARS-CoV-2 decreased significantly during the 4th week of July.